

# FORM-A-TREAD®

**SUPERIOR SAFETY, TRACTION & VISIBILITY**

## SLIPPING & TRIPPING HAZARD - STAIRWAY ENTRY: Yankee Stadium, Bronx, NY – March 2019

**Client:** New York Yankees

**Site:** Yankee Stadium

**Area Addressed:** Jerome Ave, Gate 2

Concourse Level Stairway

**Problem:** Damp stairway with poor visibility

**Product:** Form-A-Tread®, Safety Yellow & Black

**Days to Complete:** 1

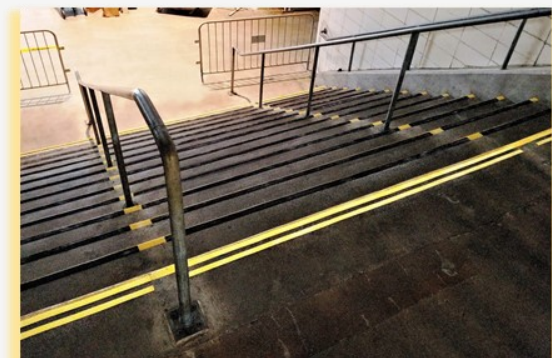
**Replaced:** Paints & Tapes



Yankee Stadium is one of the most iconic ballparks—home of the most famous team in American sports. Yet, the facility management was experiencing a reoccurring problem with one of the park's main access points to the stadium—Gate 2 on Jerome Avenue. Once fans enter this gate, they must climb 14 steps up to the Concourse, from where they can access lower level seats or the bleachers. This stairway is only 30" wide and divided by four handrails, making it difficult to maneuver and a slipping and tripping hazard. Since the new stadium's opening in 2009, the step noses were repeatedly painted yellow for visibility with aggregate added into the paint to improve traction, which did not last long under foot traffic and the hazard issue was not resolved with any permanence.

Using Form-A-Tread® Safety Yellow, two 1-inch wide treads were installed on the top and bottom steps to create a visual and tactile advantage. A 1 1/2" black tread was applied on all the middle steps. With the combination of a highly durable product and Form-A-Tread's experience addressing similar issues, the installation has eliminated the interim maintenance the paint required, providing superior traction and visibility while maintaining the professional appearance that the Yankees demand.

**After almost 2 years and millions of visitors, Form-A-Tread is still  
100% intact and protecting fans.**



Form-A-Tread Company  
Div. of RFG Materials Co. (LLC)  
Phoenixville, PA 19460  
[www.form-a-tread.com](http://www.form-a-tread.com)

**We've spent years worrying about slips, trips and falls so you don't have to!**